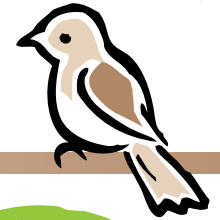
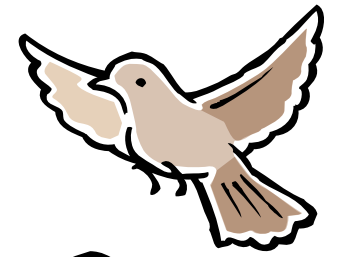




GO WILD!

Bird Watch Bingo



How many of these popular birds can you spot?


Seen

One of the commonest UK birds, the glossy black plumage and the orange-yellow bill and eye ring of the mature male Blackbird makes it easily recognizable.


Seen

Its colourful mix of blue, yellow, white and green make the blue tit one of the most attractive resident garden birds.


Seen

A colourful garden bird with a bright red face and yellow wing patch. Their long fine beaks allow them to extract those hard to reach seeds from thistles and teasels.


Seen

Easily recognisable with its bright red chest, the robin sings nearly all year round and despite their cute appearance, they are aggressively territorial and are quick to drive away intruders.


Seen

It does not feed openly on bird feeders - it prefers to hop about under the bird table or under the hedge. You'll usually hear chaffinches before you see them, with their loud song and varied calls.


Seen

Perky and bustling, house sparrows can be found from the centre of cities to the farmland of the open countryside.


Seen

The largest UK tit - green and yellow with a striking glossy black head with white cheeks and a distinctive two-syllable song.


Bingo

Its twittering song and its bright flash of yellow and green as it flies make this finch a truly colourful character.